

## Spinning Wheel

Club No. 5855

Rotary Club of Baltimore  
Chartered January, 1912 No 162

Meets For Lunch on Tuesdays at  
**The Hyatt Regency**  
Baltimore Inner Harbor  
300 Light St.  
Baltimore, MD 21202

### CLUB OFFICERS - 2010-2011

Betty Loafmann	President
Sandy Short	Vice-President
Christine Walsh	Secretary
Phil Kunzelman	Treasurer
Demetria Barrett	Asst Treasurer
Mary Anne Rishebarger	Immediate Past Present

### Directors

Mark Dent	Roger Coulson
Marcia Middleton	Howard Weisberg
Scott Tate	Vince Robinson

Francis Hogle Foundation

## Rotary Club of Baltimore

Rotary is a service association of people united worldwide who conduct humanitarian projects, encourage high ethical standards, and help build goodwill and peace in the world!!!!



Tuesday, October 19, 2010  
12:15 p.m.

### The Hyatt Regency

#### The 4-Way Test

1. Is it the TRUTH?
2. Is it FAIR to all concerned?
3. Will it build GOODWILL and BETTER FRIENDSHIPS?
4. Will it be BENEFICIAL to all concerned?

### THIS WEEK

(October 19, 2010)

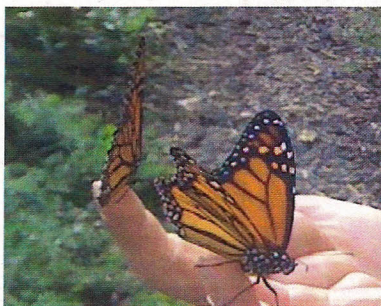
Donald C. Fry,  
President and CEO of the  
Greater Baltimore Committee  
[www.gbc.org/page/president](http://www.gbc.org/page/president)

### NEXT WEEK

(October 26, 2010)

Anne Drady  
Tree Baltimore  
Baltimore City Recreation & Parks

THE ROTARY CLUB OF BALTIMORE  
P. O. BOX 13242  
BALTIMORE, MARYLAND 21203-3242



### Program Committee Meeting

October 21, 2010 1:30-2:00 p.m.  
(3rd Tuesday after lunch meeting)